

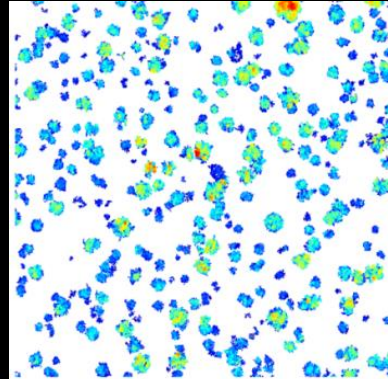
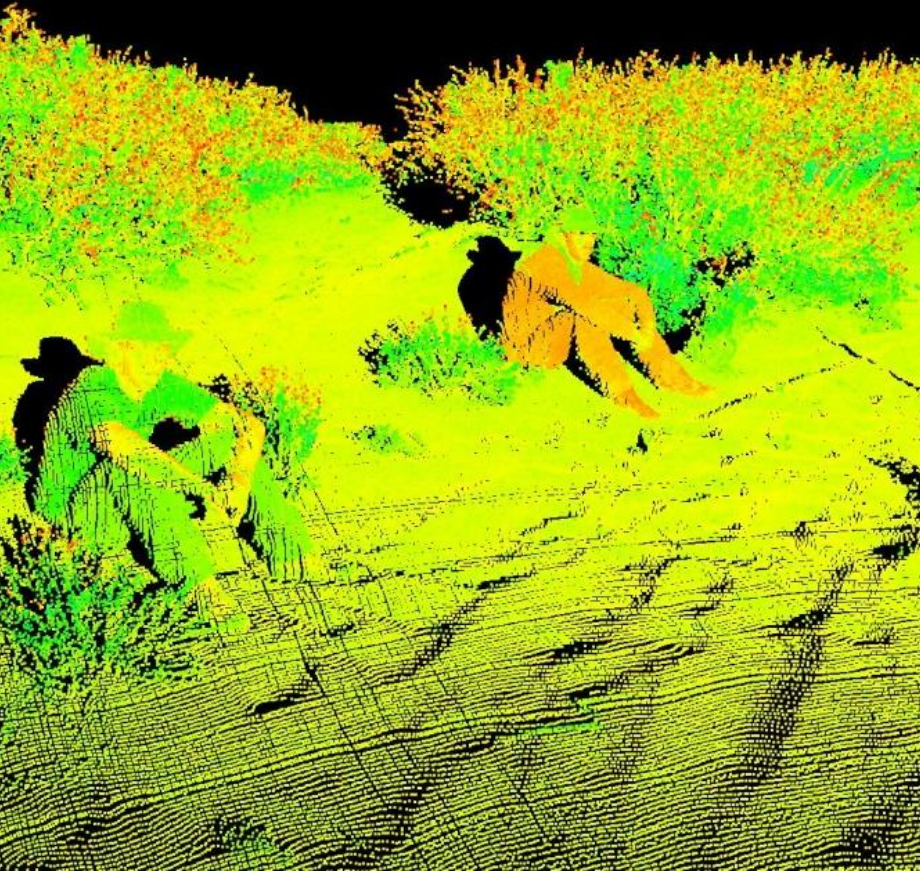
# Remotely monitoring hazardous environments

Dr Julian Leyland

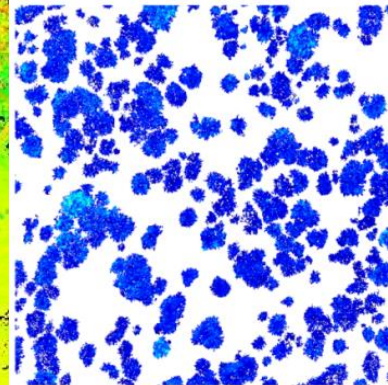
Prof. Steve Darby, Dr Jo Nield, Dr Chris Hackney

# Our background

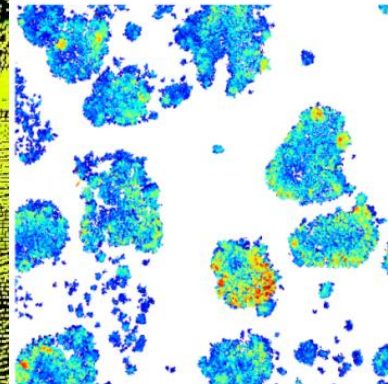
- Landscape dynamics



a) creosote site

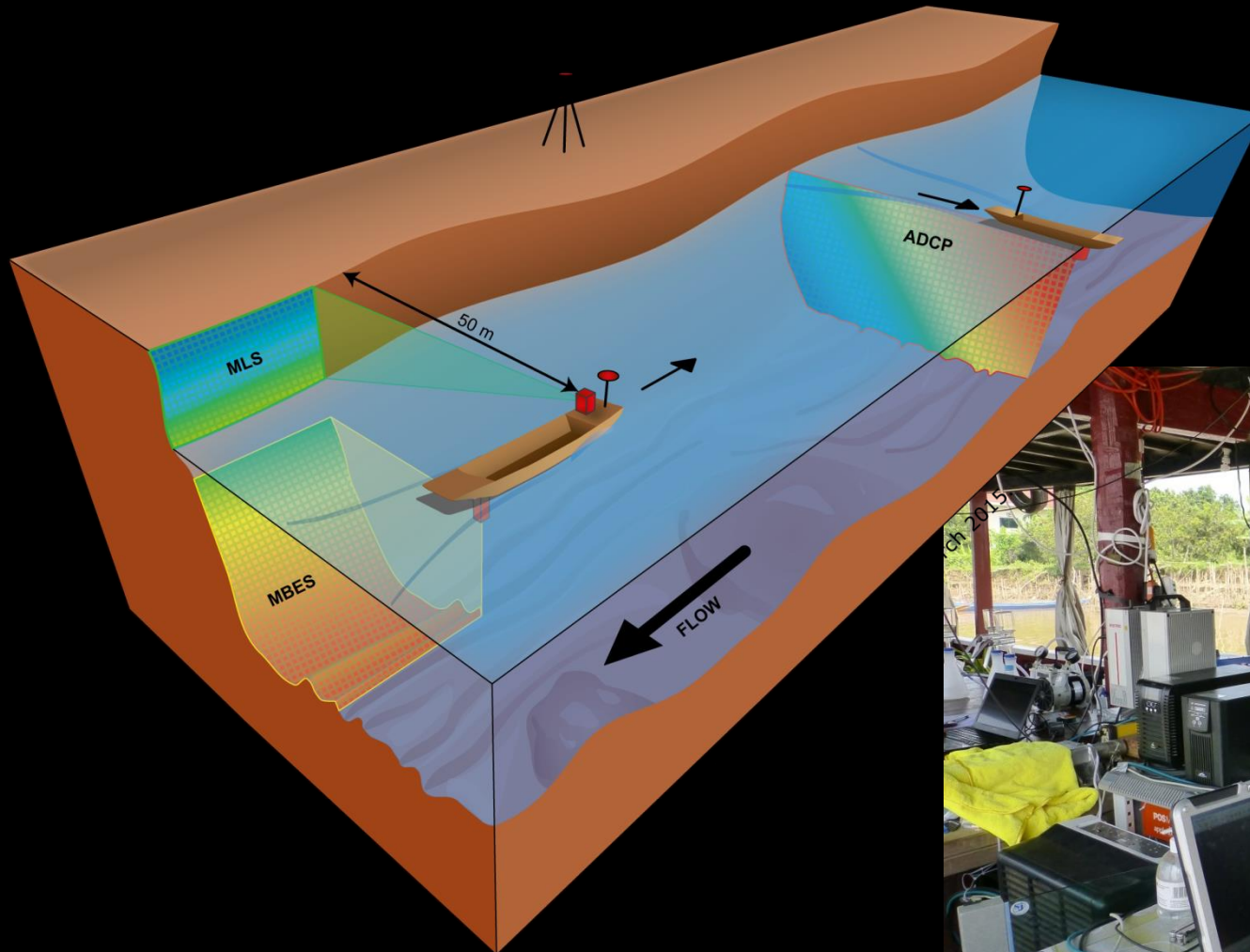


b) incipient nebkha site



c) mature nebkha site

# Our background



- Boat based MLS

# Capabilities



# Exciting possibilities



# Potential solutions...



MLS unit (Lidar and IMU) 2.5kg

